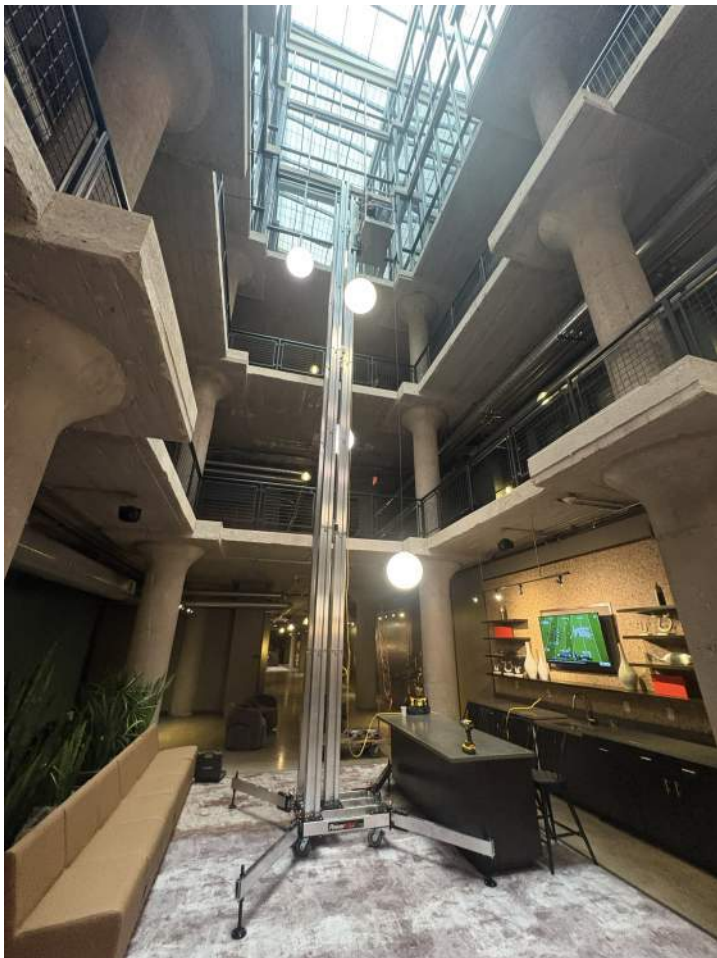


# » TRI-MAST SPECIFICATIONS

GENERAL SPECIFICATIONS	
<b>Max Platform Height</b>	46.2 ft (14.08m) (Indoor) 26.8 ft (8.17 m) (outdoor)
<b>Max Working Height</b>	52.2 ft (15.91 m) (Indoor) 32.8 ft (10m) (Outdoor)
<b>Max Platform Capacity</b>	350 lbs.
<b>Platform Dimensions</b>	34 in X 22.5 in
<b>Outrigger Footprint</b>	106 in x 80 in
<b>Max Machine Weight</b>	2061 lbs. (935 kg)
<b>Max Climbing Speed</b>	25 ft/min (7.62 m/min)
<b>Drive System</b>	120:1 Clutch Protected Transmission
<b>Power Source/ Operating System</b>	½ inch 8-amp Minimum Drill Motor
<b>Required Voltage</b>	110 VAC Single Phase
<b>Safety Devices</b>	Lock Level, overload Clutch, Overspeed Brake
<b>Climbing Unit Weight</b>	65 lbs. (20 kg)
<b>Mast Section Dimensions</b>	5 in. (127mm) X 6 in. (152 mm) Aluminum with Galvanized Steel Track
<b>Mast Connection Type</b>	Interference Locking Cam
<b>Max Tie Spacing</b>	10 ft (3.05m)

\*Based on platform height plus 6 ft (1.8 m). **Note:** Specifications subject to change without notice.



# ACCESSORIES + FEATURES

## CLIMBING UNIT



The climbing unit features a lock lever, an overspeed brake to automatically stop the platform in the event of overspeed, and a gearbox with an overload clutch. It is drill operated to eliminate typical electrical components.

## QUICK CONNECTION



Our tools-free mast connection saves time, allows for fast height adjustments, and has a built-in over-top stop safety feature.

## VERSATILE BASE



The base uses the same tools-free quick connection as the masts and offers four connection locations for a single mast or tri-mast setup.

## CASTER WHEELS



The base features four swiveling and lockable casters that allow the PowerMast to easily rotate 360 degrees to make any job accessible.

## STURDY OUTRIGGERS



The outriggers are equipped with fully adjustable stabilizers to provide a safe, stable base, even in areas with uneven or rough terrain.

## TRI-MAST TIE



Quickly and easily tie masts together to stabilize the PowerMast.





# POWERMAST FREESTANDING SYSTEM

The PowerMast tri-mast freestanding system provides easy access, fast setup, and unmatched portability for jobs up to 52.2 feet (15.91 m).

## SMART DESIGN

- Working heights up to 52.2 ft (15.91 m) indoors, 32.8 ft (10 m) outdoors

## FAST SETUP, FAST ACCESS

- Erected from ground up, unlike swing stage
- Up to 20-40 FPM mast climbing speed
- Powered by an electric drill
- Height adjustable while in use
- Tools-free mast assembly

## EASY TRANSPORT

- Removable, portable components
- Stackable aluminum masts
- Suitable for long platforms
- Sturdy outrigger base with swiveling caster wheels



### » DID YOU KNOW?

ReechCraft's PowerMast is also available in a wall-tied option! Visit [powermast.reechcraft.com](http://powermast.reechcraft.com) for more details and information!